

OXFORD CAMBRIDGE AND RSA EXAMINATIONS

Tuesday 4 June 2019 – Afternoon

GCSE (9–1) Music

J536/05 Listening and Appraising

Insert

**Time allowed: 1 hour 30 minutes
plus your additional time allowance**

Please write clearly in black ink.

Centre number

--	--	--	--	--

Candidate number

--	--	--	--

First name(s) _____

Last name _____

READ INSTRUCTIONS OVERLEAF



INSTRUCTIONS

Use black ink or pencil.

Write your answer in the space provided.

BLANK PAGE

For use with Question 5

① ②

I heard he sang ___ a good ___ song ___

③ ④

___ I heard ___ he had a style ___

⑤ ⑥

And so I came ___ to see ___ him, ___ to

⑦ ⑧

list - en for a while ___

⑨ ⑩

And there ___ he was ___ this young ___ boy, ___

⑪ ⑫

a stran-ger to___ my_ eyes_____

⑬ ⑭

Strum-ming my pain_ with his fing - ers,___

⑮ ⑯

Sing-ing my life_ with his words.____

⑰

Kill - ing me soft - ly with his___

⑱ ⑲

___song, Kill-ing me soft - ly___ with his_

(20) (21)

— song— Tell-ing my whole— life— with his—

(22)  (23)

24

with his

25

song

For use with Question 7

ci: melody instrument

b: time signature

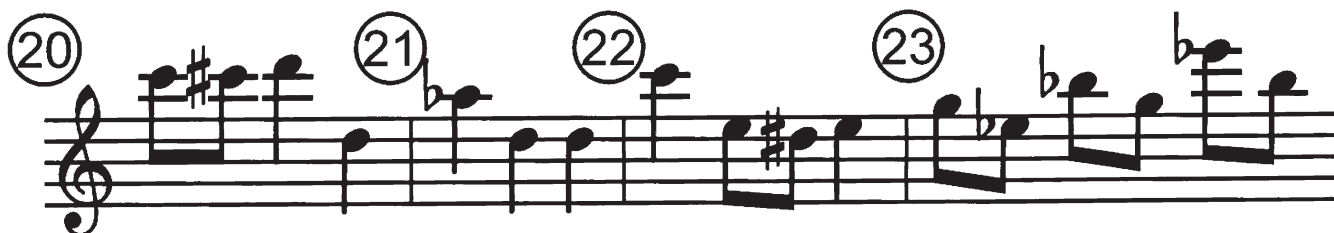
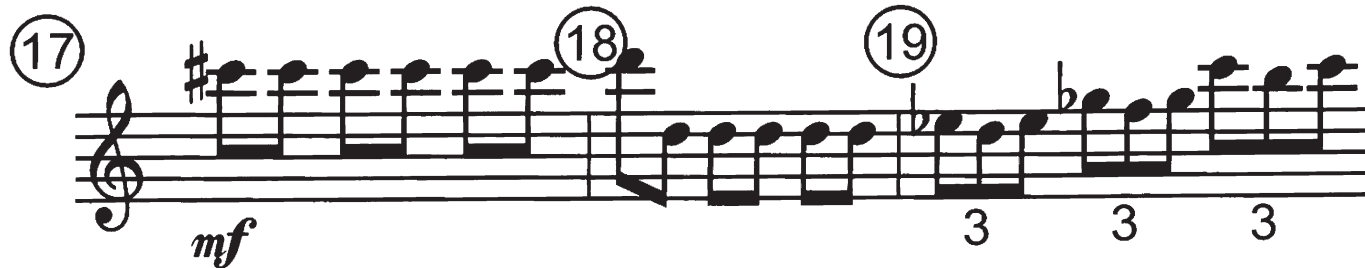
Musical notation for the eighth measure, starting with a circled '6'. The notation is on a single staff with a treble clef. It begins with a flat key signature (B-flat). The notes are: B-flat (quarter), A (quarter), G (quarter), F (quarter), E (quarter), D (quarter), C (quarter), and B (quarter). The measure ends with a double bar line.

cii: percussion

The second staff contains measures 9 through 12. Measure 9 features a continuous eighth-note pattern on a single pitch. Measure 10 begins with a half-note chord, followed by a quarter-note chord, and ends with a half-note chord. Measure 11 contains a half-note chord, a quarter-note chord, and a half-note chord. Measure 12 begins with a half-note chord, followed by a quarter-note chord, and ends with a half-note chord.

Musical notation for measures 13-16 of 'The Rose Tree'. The notation is on a single staff with a treble clef. Measure 13 starts with a treble clef and a key signature of one flat (B-flat). The melody consists of quarter notes: B-flat, A, G, F, E, D, C, B. Measure 14 continues with quarter notes: A, G, F, E, D, C, B, A. Measure 15 continues with quarter notes: G, F, E, D, C, B, A, G. Measure 16 continues with quarter notes: F, E, D, C, B, A, G, F, followed by a double bar line and a repeat sign.

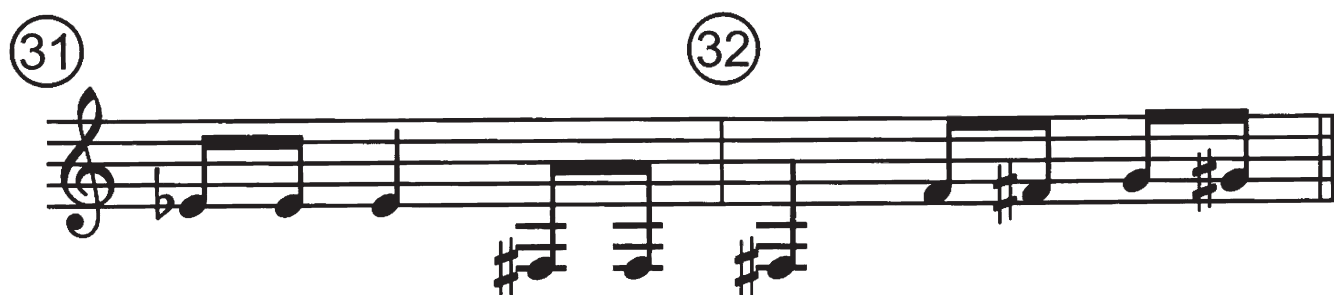
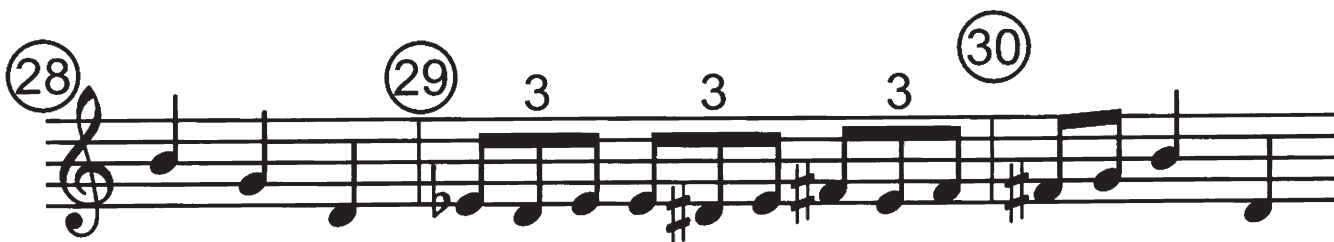
e: accidental



ciii: melody instrument



f: dynamic



BLANK PAGE

BLANK PAGE

BLANK PAGE



Copyright Information

OCR is committed to seeking permission to reproduce all third-party content that it uses in its assessment materials. OCR has attempted to identify and contact all copyright holders whose work is used in this paper. To avoid the issue of disclosure of answer-related information to candidates, all copyright acknowledgements are reproduced in the OCR Copyright Acknowledgements Booklet. This is produced for each series of examinations and is freely available to download from our public website (www.ocr.org.uk) after the live examination series.

If OCR has unwittingly failed to correctly acknowledge or clear any third-party content in this assessment material, OCR will be happy to correct its mistake at the earliest possible opportunity.

For queries or further information please contact The OCR Copyright Team, The Triangle Building, Shaftesbury Road, Cambridge CB2 8EA.

OCR is part of the Cambridge Assessment Group; Cambridge Assessment is the brand name of University of Cambridge Local Examinations Syndicate (UCLES), which is itself a department of the University of Cambridge.